

# Education and Training Before Trading



# Catalog

# Index

## **1- About company**

**Vision Mission Sales Maintenance Goals**

## **2- Urology**

## **3- General surgery**

## **4- Cardiovascular & Pulmonary**

## **5- Bio-Disinfectants & Sterilization**

# **ABOUT COMPANY**

**Founded in 2015 as Perfect Health and Bwabet Al Saha, the two companies merged to form Dijlah Medical.**

**Today, Dijlah Medical provides high-quality medical equipment using the latest technologies.**

**We work with private and public hospitals across Iraq and have a strong network of trusted doctors.**

**Our focus is on quality, reliability, and patient care, while supporting doctors, nurses, and our team to grow and succeed together.**

## **Vision**

**We are inspired by a clear vision: to be the partner of choice for doctors and healthcare professionals.**

**We work closely with our customers to fully understand their needs and daily challenges.**

**By understanding how doctors, surgeons, and medical staff work, we help them succeed in delivering the best patient care, improving efficiency, and achieving outstanding results.**

## **Mission**

**We are guided by our mission: to support healthcare professionals in improving patients' lives through reliable medical**

**instruments, microsurgery**

**solutions, and advanced medical technologies.**



# Urology



HugeMed

wellead



# **Sales**

**We are inspired by a clear vision: to be the partner of choice for doctors and healthcare professionals.**

**We work closely with our customers to fully understand their needs and daily challenges.**

**By understanding how doctors, surgeons, and medical staff work, we help them succeed in delivering the best patient care, improving efficiency, and achieving outstanding results.**

# **Maintenance**

**We provide reliable after-sales maintenance services through a specialized team of qualified medical device engineers across most cities in Iraq.**

# **Goals**

**At DIJLA MEDICAL, we aim to improve health and well-being by delivering innovative medical devices that meet the highest standards of quality and safety. Through advanced technologies and a dedicated professional team, we provide reliable solutions that enhance medical**

## Tissue Sensor - tissue/stone detection

**Tissue Sensor is an innovative development of our company aimed at absolute maximization of safety during stone crushing. This technology is designed to eliminate accidental exposure of soft tissues to laser radiation during lithotripsy.**

## Modulated pulses

**Modulated pulse settings of Urolase+ and Urolase+ Premium laser devices allow lithotripsy in different modes: from crushing «into dust» to breaking into large fragments for lithoextraction and lithoevacuation.**

## Accessories

**New wireless radiation activation pedal**

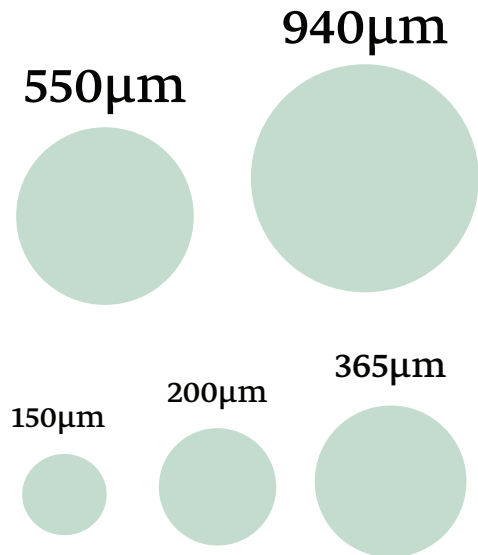


**Urolase Cart\*  
Laser Trolley**





## VPG UROLASE PREMIUM 70W



### Soft tissues

Two types of enucleation in one device

#### 1 «Dissect» mode enucleation

- Adenomatous tissue dissection is the same as the HoLEP procedure
- Haemostatic properties are by far superior to those of HoLEP
- No carbonization

#### 2 Classic thulium fiber enucleation - ThuFLEP

- Effective vaporization of soft tissues
- Precise work due to minimal depth of penetration
- No blood loss due to high level of hemostasis

### Lithotripsy

The new «Fine» dusting mode allows the surgeon to crush stones into fine dust at high speed.

The special «Ultra» pulse fragmentation mode instantly breaks down the densest stones into large fragments for subsequent lithoexcavation.

MRP\* mode - minimal stone displacement during crushing, compared to holmium lasers and with standard pulses. lithoexcavation.

# VPG UROLASE MAX 120W



### 3 New generation of thulium fiber laser

The most powerful generation of the Thulium fiber laser for urology, covering the entire spectrum of hospital manipulations: both soft tissue surgery and lithotripsy

### 1 «Tissue Sensor»

A soft and hard tissue detection system designed to maximize safety during lithotripsy.

### 2 «One Push» connector

The «One Push» instant fiber connector with automatic shutter is designed to prevent contamination and ease of connection.



## Surgeon's assistant

The Urolase MAX is the first laser with a «surgeon's assistant» function, which is based on many years of analysis of the parameters used in various manipulations by leading surgeons around the world. The main purpose of this function is to ensure maximum safety during laser surgery.

# HugeMed



## The Single-Use Revolution: Cost Savings & Efficiency Gains

The CY series reduces hospital costs by eliminating disinfection and maintenance. Its affordability enables outpatient cystoscopy, while single-use sterile packaging enhances diagnostic and treatment efficiency.

## Optimized Configuration, Enhanced Operational Experience

Weighing less than 300g, the CY series features a standard adjustable angle knob and 210° up-and-down deflection. Combined with a high-definition processor, it allows for clear visualization of the bladder and diverticulum.

## Patient Comfort & Safety First

The streamlined, bullet-shaped tip ensures smooth urethral insertion with minimal resistance. Combined with a soft insertion tube wrapped in Pebax, it effectively reduces urethral injury, providing patients with a more comfortable and safer experience.



### Streamlined Bullet-shaped Tip

The bullet-shaped low-resistance design for tip allows the insertion tube to enter the urethra more easily.



### Lightweight and Easily Maneuverable

Compact and lightweight design, ensuring ease of handling and portability.



### Cost-effective

Raise cash flow ratio; No maintenance & disinfection cost.



### Improved Efficiency

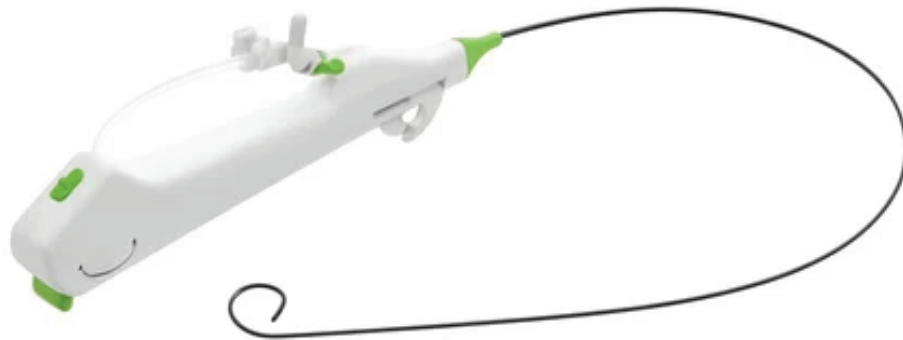
“Always Ready-to-use” with no waiting time, accelerating hospital turnover rate.



### Stable Quality

Single-use design ensures that imaging and bending angles always remain in optimal condition.

# HugeMed



## Slim yet powerful: The World's First Clinically Approved 6.3Fr

Through three generations of innovation, the HU series has overcome significant technical challenges. Without changing the working channel diameter 3.6Fr, the insertion tube diameter has progressively been reduced from 9.0Fr to 7.5Fr, and ultimately reach the extraordinary 6.3Fr. Clinically proven, it reduces Ratio of Endoscope-Sheath Diameter (RESA), enhances maneuverability in RIRS surgery, improves intrarenal pressure management, and sets a new standard in precision urology.

## Cost-Effective Advantage Over Traditional RIRS

The HU30 series Single-use Ureterorenoscope delivers significant cost savings compared to reusable systems. By eliminating reprocessing and maintenance expenses, it reduces both surgical costs for patients and operational burdens for hospitals. This cost-efficient solution makes advanced RIRS accessible to the value-segment market without compromising performance.

## Optimized Usability and Surgical Efficiency

Weighing less than 300g, the HU30M effectively alleviates surgeon fatigue during long procedures. Its standard features, including an adjustable angle knob, 285° bending range, 1080P optimization algorithm, and passive bending function, support doctors in easily tackling even the most challenging surgeries.



### Cost-effective

Raise cash flow ratio; No maintenance & disinfection cost.



### User-friendly

Simple and intuitive ergonomic handle, giving more comfort and preciseness on the examination.



### 285° Bending Angle

Bending section made by medical grade stainless steel, Up to 285° up and down bending angle.



### 1:1 Torque Ratio

The 1:1 torque ratio maximizes the replication of the medical staff's precise movements, ensure smooth surgical procedures.



### Optimized Imaging

160K CMOS sensor chip on tip design; Optimized algorithm improves image quality.

# wellead



**Stone Retrieval Basket**



**Hydrophilic Guide Wire**

Size **0.032 \* 150cm**  
**0.028 \* 150cm**



**Ureteral stent**

Size **4 fr , 4.6fr**



**Nephrostomy sheath**

Size **26 , 24, 16, 18**

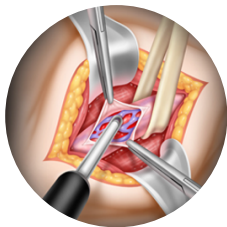
**Ureteral Access sheath**

Size **8.5 , 10 , 9.5**

## Features and Benefits

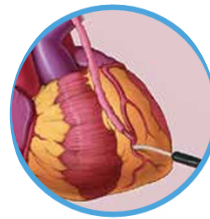


- Integrates a miniature probe tip with a high operating frequency
- Emits a tightly focused signal, imparting the precision required for microsurgery
- Probes specifically designed to minimize obstruction of the surgical view
- Provides real-time evaluation of vasculature
- Cost-effective and ideal for intraoperative use in microsurgical procedures
- Utilizes disposable Doppler probes which optimize patient safety and probe reliability
- Eliminates probe failure due to reprocessing



### Urology

Identify and facilitate the preservation of the testicular artery during varicocele



### Cardiovascular

Offering an alternative to expensive complicated flow monitoring equipment the VTI 20 MHz Doppler System's cardiovascular uses include locating IMAs in redo cases, verifying technical results of anastomoses and ..detecting low-flow IMAs



# General surgery

---

 **Lasotronix**  
LASERY OD POKOLENÍ

**FENG** 



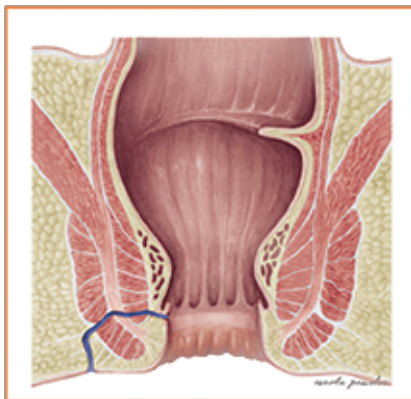


# General surgery

## Proctology



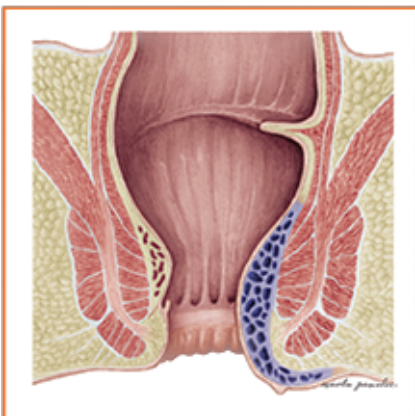
**WAVELENGTH (980nm) (1470nm)**



### FISTULAS

Under LA/GA, the laser energy is delivered via diffuse emission fiber into the anal fistula tract and is used to ablate thermally and close off the abnormal pathway. The laser energy induces destruction of the fistula epithelium and simultaneous obliteration of the remaining fistula tract by a shrinkage effect. The epithelialized tissue is being destroyed in a controlled way and the fistula tract collapses to a very high degree. This also supports and accelerates the healing process.

Advantage of using diode laser using diffuse emission fiber compare to conventional surgery is, it gives a good control to operator, also allows to use in convoluted tract, no excision or splitting independent on the length of the tract. This laser procedure can be executed in only a few minutes.



### HEMORRHOIDS

Under LA/GA, laser energy is delivered by conical fiber directly to hemorrhoidal nodes and they will obliterate from inside and this will help to preserve mucosa and sphincter structure to an extremely high precision. Laser energy is used to close off the blood supply nourishing the abnormal growth. The laser energy induces destruction of the venous epithelium and simultaneous obliteration of the hemorrhoidal pile by a shrinkage effect.

Advantage of using laser compare to conventional surgery, fibrotic reconstruction generates new connective tissue, which ensures that the mucosa adheres to the underlying tissue. This also prevents the occurrence or recurrence of prolapsed hemorrhoids. The laser procedure can be executed in only a few minutes.

# General surgery



## Bariatric & Laparoscopic Surgery

### Lunar S / Lunar S Pro; Single-Handed Smart Powered Stapler



**Fully powered single-handed Smart Stapler.**

**Tissue thickness detection to adapt firing speed in real time for optimal staple formation and to reduce the risk of bleeding.**

**Single handed powered articulation of 55 degrees on each side to improve surgical efficiency.**

**Ergonomic design with enlarged and inclination angle OLED-screen making it easier to observe displayed information like pre-compression, jaw status, articulation angle, tissue thickness, battery status and knife blade movement.**

**Reinforced tissue compression and drop shaped anvil pockets for secure and consistent B-shape staple formation.**

**45 mm and 60 mm jaw length.**

**Lunar S to use with Fulgrip reloads.**

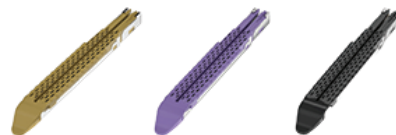
**Lunar S Pro to use with Stepwise reloads.**

**Detachable Curved Tip for 45mm jaw length.**

**Built in security mechanism for manual jaw opening and to reset jaw articulation.**

### Lunar U Pro

Stepwise Staple Reloads  
for Lunar U Pro

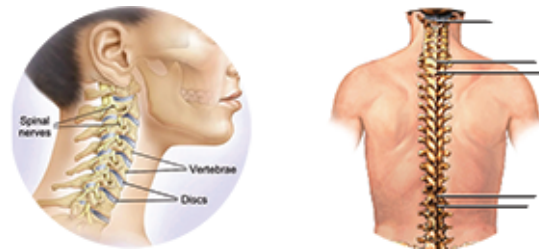


Model	Color	Rows	Open Staple Height(mm)
DACT60	Tan	6	2.5/3.0/3.5
DACP60	Purple	6	3.5/3.8/4.1
DACX60	Black	6	4.1/4.4/4.7



# General surgery

## NEUROSURGERY

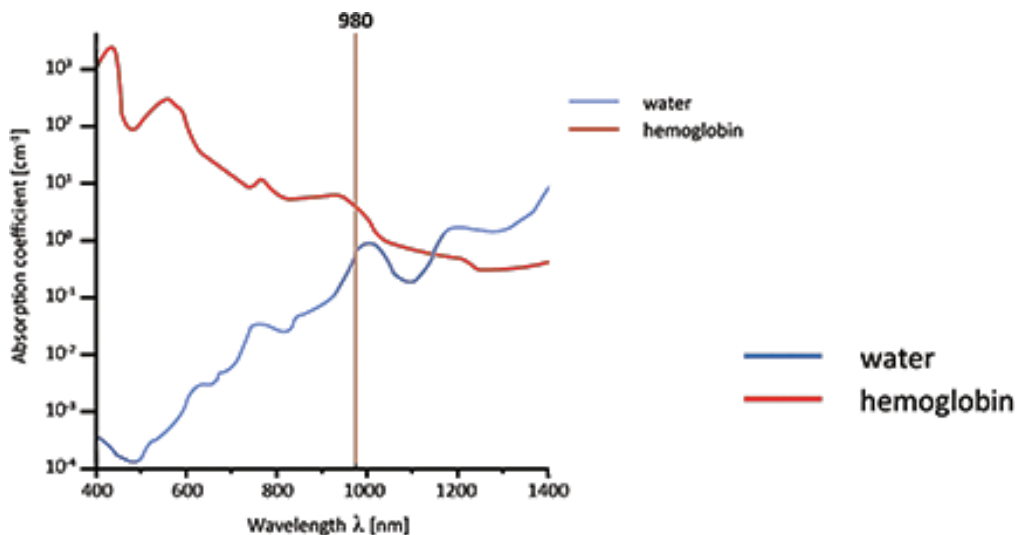


### WAVELENGTH (980nm)

**PLDD (Percutaneous Laser Disc Decompression)** is a minimally invasive procedure that falls into the category of Percutaneous intervertebral surgeries with the aim to significantly reduce the patient's pain and recover neurological deficit.

Percutaneous laser disc decompression (PLDD) is a type of surgery in which a laser probe is inserted into the intervertebral disc space under MRI or C-arm guidance and laser energy applied for achieving decompression and neuromodulation thereby relieving the pain

PLDD is a minimally invasive procedure typically used to treat patients who have medium sized slipped discs. During the procedure a laser probe is inserted into the intervertebral disc space to beam energy at degenerated tissues. The aim is to vaporize unwanted disc material, around 20-30 mg, to reduce intradiscal pressure. This causes the disc hernia or protrusion to deflate and decompresses the nerve, ultimately relieving any pain or



# PulmOne



## **MiniBox+ Cart (Optional)**

For complete mobility, a dedicated cart provides a workstation on wheels, including compartments for a gas cylinder, printer, and spare filters.

### **Enhance Your Practice**

The MiniBox+ high-performance pulmonary function test device provides a clinically equivalent alternative to the body box with ultimate convenience and ease, maximum time savings and a great return on investment.

### **CLINICIAN-FRIENDLY, EASY TO USE**

Fully automatic LVM and DLCO, easy to operate by anyone on your medical/office staff, with easy-to-access UI for reports and data export options.

### **SHORT TESTING TIME, MOBILE**

Facilitates rapid and efficient patient flow.

### **ACCURATE & REPEATABLE**

Automatically generated results minimize technician bias.

### **PROVEN EQUIVALENCY TO THE BODY BOX**

With LVM plethysmography. Read the paper

### **RELIABLE, SELF-CALIBRATING**

Fully automated quality control algorithms and advanced sensor technology.

### **REIMBURSABLE**

All tests are eligible for reimbursement in the USA (subject to specific health plan policy).

### **PEDIATRIC USE**

Children from age 5 can be tested.



# Cardiovascular & Pulmonary

---

Pulm<sup>o</sup>ne



## Automatic washer disinfector



Fully automatic surgical instrument cleaning and disinfection equipment, fully automated processing of cleaning, disinfection, drying, and oiling:1. Volume: 500L2. Material: 304 stainless steel3. Double door interlocking, automatic lifting door4. Water consumption: 23L/step5. Cleaning time: 27 minutes6. Meet the B-level disinfection standard of German BGA7. Working mode: electric heating/steam heating/dual energy of steam and electricity8. Configuration: 1 host, 1

## pulse vacuum steam sterilizer

CSSD must be equipped with high-temperature sterilization equipment:1. Capacity: 600L2. Door: Double door pressure safety interlock device, motorized door opening method3. The main inner shell, reinforcement ribs, and door panels are all made of 304 stainless steel; Design life of 15 years4. Working mode: Electric heating5. Configuration: 1 host, 1 disinfection vehicle, and 2 transport vehicles6. Optional: 1 air compressor



## H2O2 low temperature plasma sterilizer



**Dual Chamber**  
Independent dual chamber design to run two different cycles simultaneously to drastically improve turnover of surgical devices.

**Smart Recognition**  
Equipped with RFID reader, camera and bar code reader to realize fast recognition of consumables and auto cycle binding. Assisting users to fast login according to access level settings.

**Efficiency Improvement**  
Shortest cycle time 20mins.

**Multiple Cycles**  
6 preset cycles can be run simultaneously in the dual chambers

**AI Processor**  
Compatible with MS Windows® and Android® system for remote OTA system update. Voice interactivity for voice control of routine operations.

**Closed-end Traceability**  
Connect to rapid readout biological reader for closed-end traceability of sterilization results and biological incubation results



## Central sterile services department (CSSD)

---





## **The NOCOSPRAY range**

**Treatment of volumes from 10 to 1,000 m<sup>3</sup>**

## **NOCOTECH: A high-performing and sustainable solution**

Non-corrosive, including for electronic equipment

Non-toxic, non-allergenic

Saves time (no rinsing required)

99.9% biodegradable No residue

100% French Short circuit

100% automatic

European Biocide MA Manufactured in line with ISO 13485

Economic Budget-friendly

Easy to use




# department (CSSD)




- **Clean Area**
- **Dirty Area**
- **Sterile Area**

**dijla**  **medical**  
sharing innovation

 **07755449000**

 **Baghdad/ AL-Yarmouk**

---

 **07755459000**

 **Erbil / italy2 / office279**

---

 **[www.dijla-medical.com](http://www.dijla-medical.com)**

 **[info@dijla-medical.com](mailto:info@dijla-medical.com)**

---